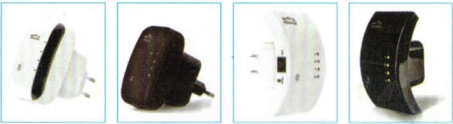


# WiFi-Repeater

## User Manual

### Quick Installation Guide(Q.I.G.)



REV.3.2.1

A4. The login screen below will appear. Enter the "User Name" and "Password" then click "OK" to login. The default User name is "admin" and Password is "admin".

Username

admin

Pas sword

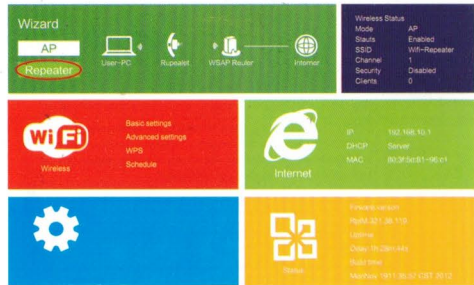
\*\*\*\*\*

Language

English

Submit

A5. After logging in, you will see the web page below: Click on "Repeater" to continue.



— 04 — Wireless-N Wifi Repeater

### Open Source Code

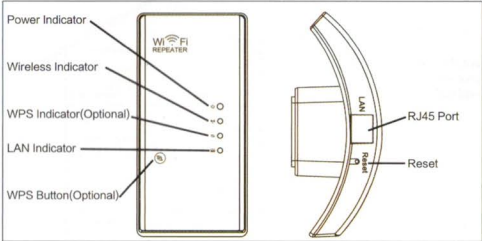
This product includes software codes developed by third parties. These software codes are subject to either the GNU General Public License (GPL), Version 2, June 1991 or the GNU Lesser General Public License (LGPL), Version 2.1, February 1999. You can copy, distribute, and/or modify in accordance with the terms and conditions of GPL or LGPL.

The source code should be complete, if you think our need to provide any additional source code files under GNU General Public License (GPL), please contact us. We are committed to meeting the requirements of the GNU General Public License (GPL). You are welcome to contact our local office to get the corresponding software and licenses. Please inform us your contact details and the product code. We will send you a CD with the software and license for free.

Please refer to the GNU GPL Web site for further information.  
<http://www.gnu.org/licenses/licenses.en.html>.

### Introduction :

The WiFi Repeater is a combined wired/wireless network connection device designed specifically for small business, office, and home office networking requirements. It allows a wireless network to be expanded using multiple access points without the need for a wired backbone to link them. It also works well with other 11b/g and 11n protocol wireless products.



**NOTE:** If you need to **reset** the Wi-Fi Repeater, you need press and hold the reset button inside the tiny hole for **10 seconds**.

— 01 — Wireless-N Wifi Repeater

A6. Select your Wireless SSID to continue.

Wireless Repeater Mode

SSID

Channel

Security

Connect/Start

network

6

WPA2-PSK

Apply Refresh

A7. When you see below, please do not change any setting but only insert the key of your network.

Connect to Repeater ssid

Security key

Network

Your SSID

Network's password

18

Apply Refresh

Click on 'Apply' button, The Repeater will restart.  
Wait for a few seconds your Wi-Fi Repeater is ready for use.

\* The default wireless SSID and Security key of Wi-Fi Repeater is same as your AP/router.

— 05 — Wireless-N Wifi Repeater

### Package Contents

Before you starting to use this router, please check if there's anything missing in the package, and contact your dealer of purchase to claim for missing items:

- 1 x Wireless-N Repeater
- 1 x RJ-45 Networking Cable
- 1 x Quick installation Guide

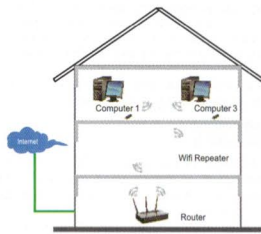
### Getting Started

#### Setting up a Wireless Infrastructure Network

For a typical wireless setup at home (as shown below), please do the following:

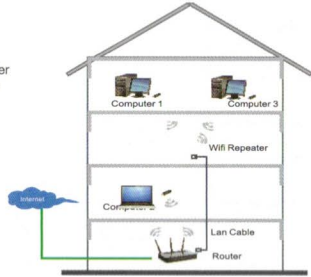
#### Wireless Repeater Mode

You will need WiFi AP/Router Internet access



#### Wireless AP Mode

You will need broadband Router Internet access



Connect the WiFi-Repeater to your Router/Switch with RJ-45 Cable

— 02 — Wireless-N Wifi Repeater

### B. Configure the Wi-Fi Repeater with RJ45 Cable.

1. Plug the Wi-Fi Repeater to a wall socket. Connect your computer 1 laptop with the Wi-Fi Repeater with enclosed RJ45 Cable.

2. Follow process A3 to A7 to configure your Wi-Fi Repeater.

### C. Configure the Wireless AP Mode.

1. Plug the Wi-Fi Repeater into a wall socket.

2. Follow process A2 to A4.

3. Click on 'AP' to continue.



— 06 — Wireless-N Wifi Repeater

### How to configure the Wi-Fi Repeater

You can configure the Wi-Fi Repeater by connecting it with your computer/laptop with enclosed RJ45 cable or wirelessly.

### A. Configure the Wi-Fi Repeater wirelessly.

A1. Plug the Wi-Fi Repeater to a wall socket.

A2. Click on the network icon ( ) on the right bottom of your desktop. You will find the signal from the **Wi-Fi Repeater**. Click on 'Connect' and wait for a few seconds.

A3. Open web browser and type <http://192.168.10.1> in the browser's address box. This number is the default IP address for this device.

**Note:** Please check whether the WiFi-Repeater accord with factory default settings once you can't download <http://192.168.10.1>. If you are still not sure what reasons, you can reset the WiFi-Repeater, just need to press the **reset** button for **10 seconds**, then try again.

— 03 — Wireless-N Wifi Repeater

4. The following message will be displayed on your web browser:

Wireless AP Mode

SSID

Channel

Security type

Security key

Your SSID

Auto

WPAWPA2 PSK

Your password

13

Apply Refresh

|               |  |
|---------------|--|
| SSID          | the "SSID" of your wireless network.   |
| Channel       | Auto (recommend)   |
| Security type | Setup the wireless security and encryption to prevent from unauthorized access and monitoring. Supports 64/128-bit WEP, WPA, WPA2, WPAWPA2 encryption methods. |
| Security key  | the "Password" of your wireless network.   |

Click on 'Apply' button, The Repeater will restart.  
Wait a few seconds your Wi-Fi Repeater is ready for use.

— 07 — Wireless-N Wifi Repeater

### How to connect your computer/laptop with the Wi-Fi Repeater

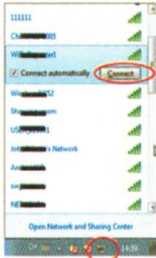
#### Adding a Wireless computers to the WiFi-Repeater

1. Log on to the computer.

2. Open Connect to a Network by right-clicking the network icon ( ) in the notification area.

3. Choose the wireless network from the list that appears, and then click **Connect**.

4. Type the network security key or passphrase if you are asked to do so, and then click **OK**. You'll see a confirmation message when you are connected to the network.



5. To confirm that you added the computer, do the following:  
Open Network by clicking the **Start** button ( ), and then clicking **Control Panel**. In the search box, type **network**, and then, under Network and Sharing Center, click **View network computers and devices**. You should see icons ( ) for the computer you added and for the other computers and devices that are part of the network.

Note : If you don't see icons ( ) in the Network folder, then network discovery and file sharing might be turned off.

### Adding a Wireless computers to the WiFi-Repeater with WPS Button

1. Log on to the computer.
2. Press the **WPS** button of the WiFi Repeater directly for 2.3 seconds.
3. Press the **WPS** button of the Wireless Adapter directly for 2~3 seconds. Click Finish to complete the WPS configuration. (Please check your **Wireless adapter Manual with WPS configuration**)
4. You should see icons ( ) for the computer you added and for the other computers and devices that are part of the network.

### Adding a wired (Ethernet) computer to the WiFi-Repeater

1. Plug the Wi-Fi Repeater to a wall socket. Connect your computer 1 laptop with the Wi-Fi Repeater with enclosed RJ45 Cable.
2. To confirm that you added the computer, do the following:  
Open Network by clicking the **Start** button ( ), and then clicking **Control Panel**. In the search box, type **network**, and then, under Network and Sharing Center, click **View network computers and devices**. You should see icons ( ) for the computer you added and for the other computers and devices that are part of the network.

For more information:  
<http://windows.microsoft.com/en-US/windows7/Add-a-device-or-a-computer-to-a-network>  
<http://windows.microsoft.com/en-US/windows/setting-up-a-wireless-network>  
<http://windows.microsoft.com/en-US/windows-vista/setting-up-a-wireless-network>

— 08 — Wireless-N Wifi Repeater

### Change Management password

Default password of Wireless Router is "admin", and it's displayed on the login prompt when accessed from web browser. There's a security risk if you don't change the default password, since everyone can see it. This is very important when you have wireless function enabled.

To change password, please follow the following instructions:

Please click **Management -> Password** menu on the web management interface, the following message will be displayed on your web browser:

Management

Change your password

Current password

New password

Retype password

Apply Cancel

If you want to keep original password unchanged, click **Cancel**.

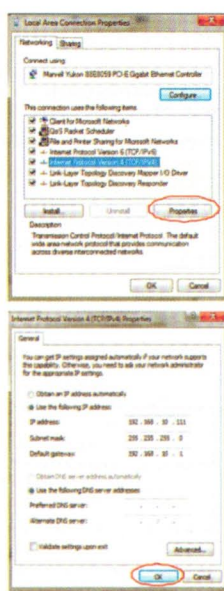
Click 'Apply' button, The WiFi Repeater will log off.

— 13 — Wireless-N Wifi Repeater

### How to configure your computer/laptop with the Network IP Address

1. Log on to the computer.

2. Click the **"Start"** button (it should be located at the lower-left corner of your screen), then click **"Control Panel"**. Click **"View Network Status and Tasks"**, and then click **"Manage Network Connections"**. Right-click **"Local Area Network"**, then select **"Properties"**. When the **"Local Area Connection Properties"** window appears, select **"Internet Protocol Version 4 (TCP/IPv4)"** and then click **"Properties"**.



3. Setting IP address manually: Type IP address is **192.168.10.x** (x is from 2 to 254), and Subnet mask is **255.255.255.0**. Type the Router's LAN IP address (the default IP is **192.168.10.1**) into the Default gateway field.

— 10 — Wireless-N Wifi Repeater

### Firmware Upgrade

The system software used by this router is called as 'firmware', just like any applications on your computer, when you replace the old application with a new one, your computer will be equipped with new function. You can also use this firmware upgrade function to add new functions to your router, even fix the bugs of this router.

Please click **Management -> Upgrade Firmware** located at the web management interface, and then the following message will be displayed on your web browser:

Management

Upgrade firmware

Current firmware version

Firmware version

Upload

Cancel

Click **"Browse..."** or **"Choose File"** button first; you'll be prompted to provide the filename of firmware upgrade file. Please download the latest firmware file from our website, and use it to upgrade your router.

After a firmware upgrade file is selected, click **"Upload"** button, and the router will start firmware upgrade procedure automatically.  
The procedure may take several minutes, please be patient.

**NOTE:** Never interrupt the upgrade procedure by closing the web browser or physically disconnect your computer from router. If the firmware you uploaded is corrupt, the firmware upgrade will fail, and you may have to return this router to the dealer of purchase to ask for help. (Warranty voids if you interrupted the upgrade procedure).

— 14 — Wireless-N Wifi Repeater

### Configuring via Web Browser

#### Wireless Base Configuration - AP Mode

In AP mode and click **"Wireless -> Basic Settings"** located at the web management interface, the following message will be displayed on your web browser:

You could configure the minimum number of Wireless settings for communication, such as Network Name (SSID) and Channel. The Access Point can be set simply with only the minimum setting items.

Wireless settings

Basic settings

Basic settings

Advanced settings

WPS

Schedule

Back

Wireless Enable

SSID

Channel

Security type

Security key

Enabled/Disable

WiFi-Repeater

Auto

Disable

Apply

|                 |  |
|-----------------|--|
| Wireless Enable | Wireless On/Off  |
| SSID            | the "SSID" of your wireless network.   |
| Channel         | Auto (recommend)   |
| Security type   | Setup the wireless security and encryption to prevent from unauthorized access and monitoring. Supports 64/128-bit WEP, WPA, WPA2, WPAWPA2 encryption methods. |
| Security key    | the "Password" of your wireless network.   |

Click 'Apply' button, The WiFi Repeater will restart.

— 11 — Wireless-N Wifi Repeater

### Wireless Base Configuration - Repeater Mode

In Repeater mode and click **"Wireless -> Basic Settings"** located at the web management interface, the following message will be displayed on your web browser:

Wireless settings

Basic settings

Basic settings

Advanced settings

WPS

Schedule

Back

Wireless Enable

SSID

Channel

Security type

Security key

Enabled/Disable

WiFi-Repeater

Auto

Disable

Apply

|                 |   |
|-----------------|---|
| Wireless Enable | Wireless On/Off                                   |
| Delete          | Remove the repeater connection profile            |
| Repeater ssid   | the "SSID" of your repeater wireless network.     |
| Security type   | Setup the repeater ssid security type.            |
| Security key    | the "Password" of your repeater wireless network. |

Click 'Apply' button, The WiFi Repeater will restart.

— 12 — Wireless-N Wifi Repeater

### Factory Default and Settings Backup, Restore

You can backup all Setting of this router to a file, so you can make several copied of router configuration for security reason.

To backup or restore router setting, please follow the following instructions: Please click **'Save/Reload setting'** located at the web management interface, then the following message will be displayed on your web browser:

Management

Save/Reload settings

Current settings

Save settings

Load settings

Reset settings

Save/Reload settings

Save settings

Load settings

Reset settings

|                |   |
|----------------|---|
| Save Settings  | Press 'Save...' button, you can please save it as another filename for different versions, and keep it in a safe place.   |
| Load Settings  | Press 'Browse...' to pick a previously-saved configuration file from your computer, and then click 'Upload...'. After the configuration is uploaded, the router's configuration will be replaced by the file you just uploaded. |
| Reset Settings | Click this 'Load default' button to remove all settings   |

**WEEE Directive & Product Disposal**  
At the end of its serviceable life, this product should not be treated as household or general waste. It should be handed over to the applicable collection point for the recycling of electrical and electronic equipment, or returned to the supplier for disposal.

— 15 — Wireless-N Wifi Repeater