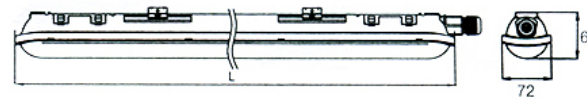


LED WATERPROOF IP65

6705/6707/6706/6708



SKU No.	W	C°	Lenght	EM	Sensor	IP
6705/6707	40/55	-20°/+40°	1180/1480	-	Yes	65
6706/6708	40/55	-20°/+40°	1180/1480	-	Yes	65

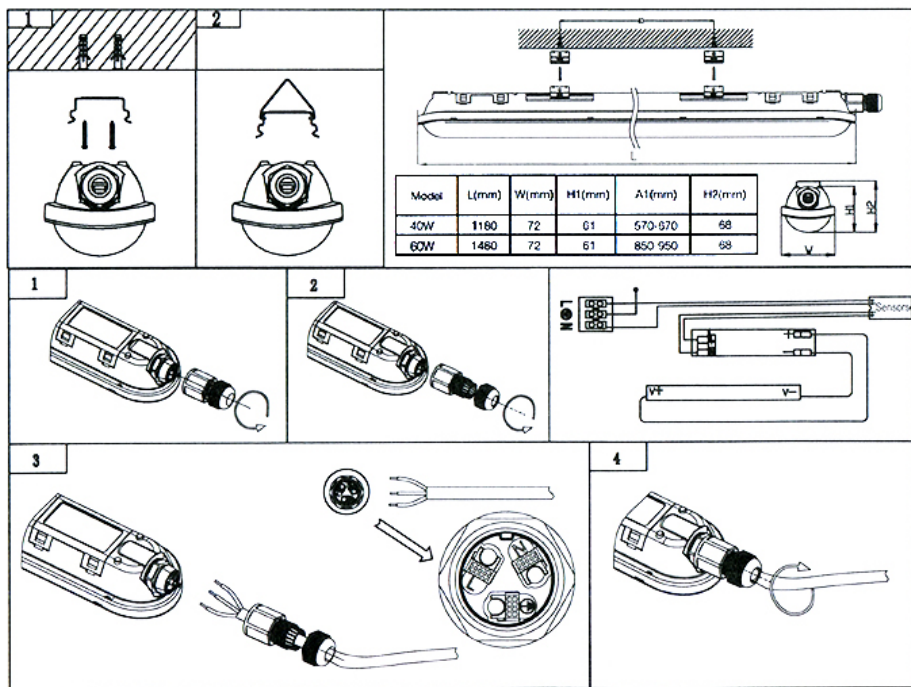


OPTONICA LED
www.optonicaled.com

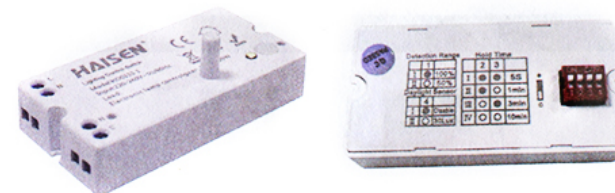
OPTONICA

Please read the following instructions carefully to ensure that mounting operation will be carried out in the right way. These instructions should be properly preserved for future reference.

1. Use H07RN-F, 3x1.0mm² rubber cable;
2. Luminaire should be installed by authorized electrician only acc. to national wiring rules. If the external flexible cable or cord of this luminaire is damaged, it shall be exclusively replaced by the manufacturer or his service agent or similar qualified person in order to avoid a hazard;
3. The power supply must be deactivated prior to assembly, maintenance, exchanging the bulb or cleaning processes. Remove the fuse or switch the fuse to OFF and secure from reactivation;
4. Picture 1, screw the gland;
5. Use a screwdriver to open the box;
6. Connect brown wire (L) to terminal L, blue wire (N) to terminal N, connect the grounding wire and green/yellow fixture wire;
7. Terminal box installed back, the terminal box must be installed the correct position.



OPTONICA



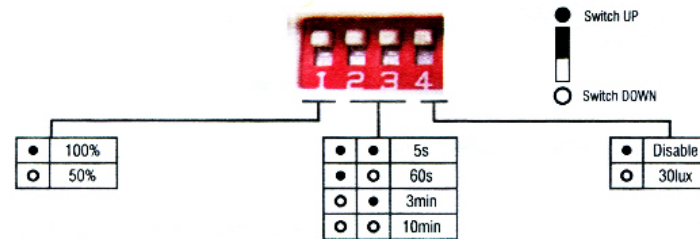
HD011S 1 DIP switches on back

Technical data

Operating voltage	220~240 VAC 50/60Hz
Switching capacity	Max 100W
Stand-by power	≤0.5W
Detection area	50%/100%
Hold time	5s/60s/3min/10min
Daylight threshold	30Lux/Disable
Microwave frequency	5.8GHz±75MHz
Microwave power	<0.3mW
Interfaces	4-pole pluggable clamp terminal(L,N,N,L) for 0.75-1.5mm ² cable
Mounting height	Max 6m(ceiling mounted); Max 3m(wall mounted)
Detection range	Max.ø14m(ceiling mounted); Max.10m(wall mounted)
Detection angle	30°-150°
Operating temperature	-25°C~+60°C
IP rating	IP20

OPTONICA

Settings



Detection area

Detection area means detection coverage. It can be adjusted by combining DIP switches for specific application.

Hold-time

Hold-time means the time period the light will be ON after the last detection.

Daylight threshold

Daylight sensor prior to motion sensor. Set threshold for specific needs. If Disable, only motion sensor works.

Application

Function Demo-On/off control



With sufficient daylight, even when motion detected, light remains OFF.



With insufficient daylight, when motion detected, light ON.



After the last detection and the present hold time elapsed, light OFF.