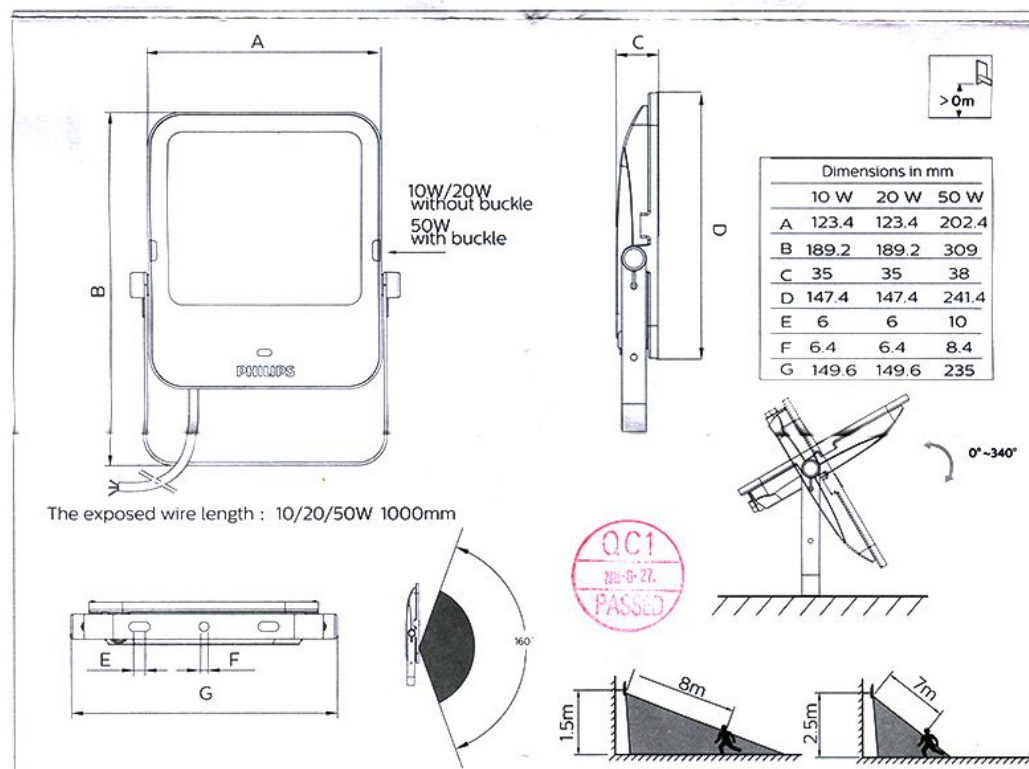
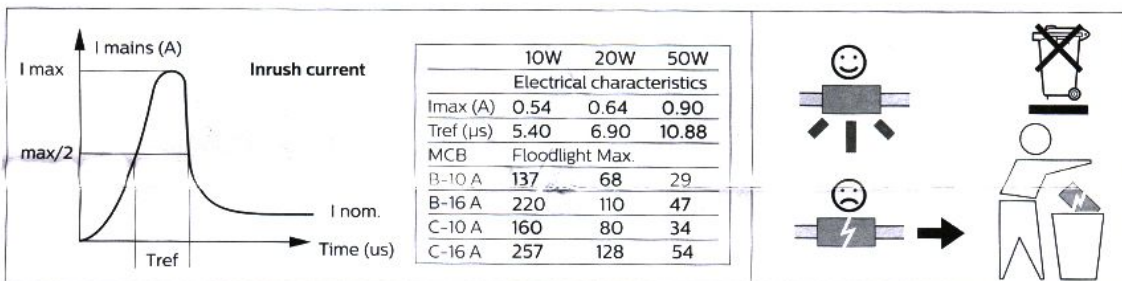
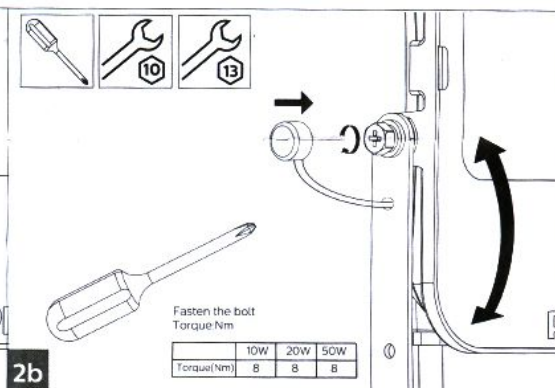
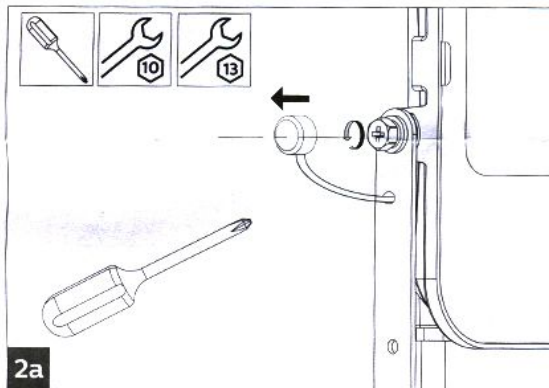
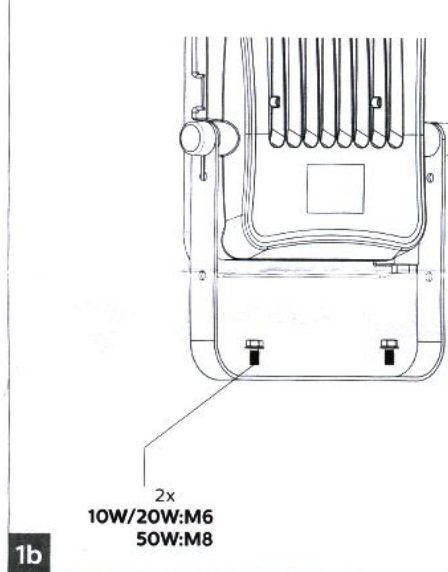
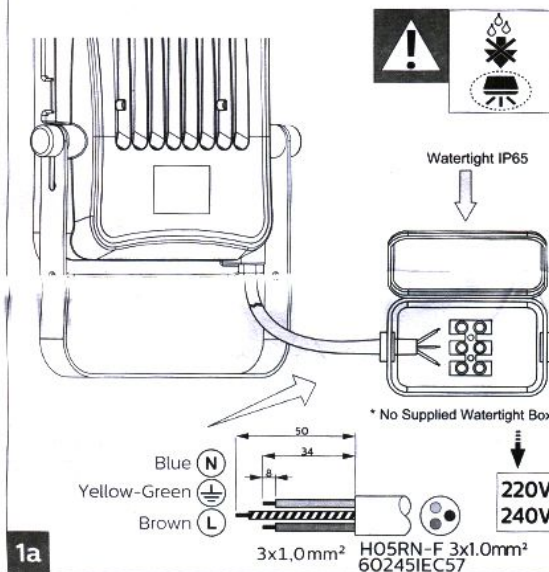


	Flux (lm)	Power (W)	Beam	m <sup>2</sup>	kg
BVP154 LED10/830 PSU 10W VWB MDU CE	1000	10	100°-120°	0.018	0.63
BVP154 LED20/830 PSU 20W VWB MDU CE	2000	20		0.018	0.63
BVP154 LED50/830 PSU 50W VWB MDU CE	5000	50		0.048	1.44
BVP154 LED10/840 PSU 10W VWB MDU CE	1050	10		0.018	0.63
BVP154 LED21/840 PSU 20W VWB MDU CE	2100	20		0.018	0.63
BVP154 LED52/840 PSU 50W VWB MDU CE	5250	50		0.048	1.44



Install the luminaire according to the national regulations.

If the luminaire is higher >3 m, the use of 2nd fixing security system is needed.



- The luminaire shall be installed or maintained by a qualified electrician and wired in accordance with the latest IEE electrical regulations or the national requirements.
- The external flexible cable or cord of this luminaire cannot be replaced; if the cord is damaged, the luminaire shall be destroyed.
- The light source of this luminaire is not replaceable; when the light source reaches its end of life the whole luminaire shall be replaced.

**This light has two modes: sensor active mode and sensor inactive mode.**

The sensor active mode means that the microwave sensor is in service. Sensor inactive mode means that the sensor is in stop working state.

How to enter sensor active mode:

Step 1: Press the TEST/AUTO button.

Step 2: Select the appropriate sensing time, sensor working distance, and sensing light intensity as needed;

How to enter sensor inactive mode:

Press OFF/ON.

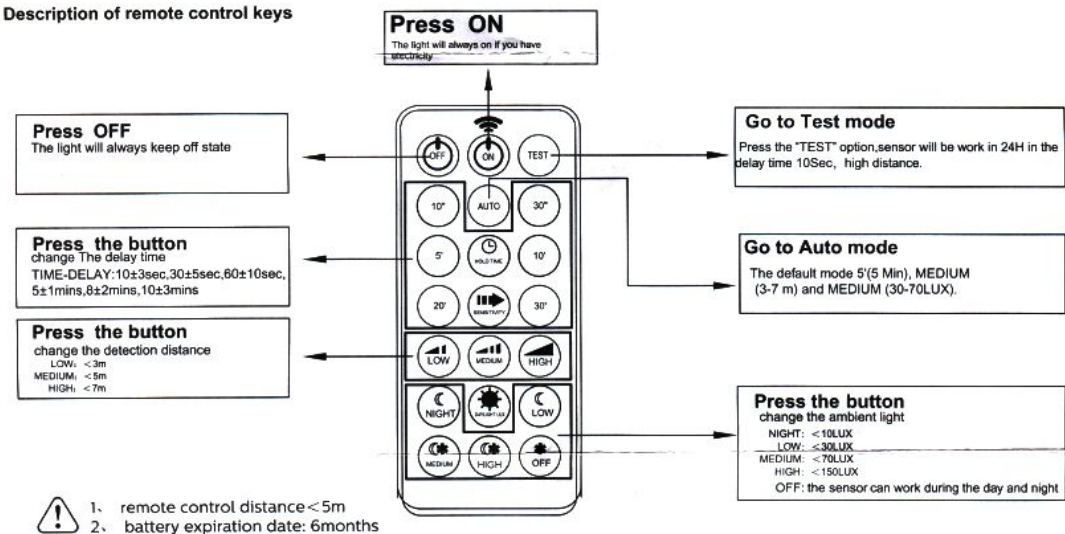
OFF: Turn off the light.

ON: Turn on the light.

Note:

After the light is reenergized, the sensing mode is the sensing mode before the shutdown.

#### Description of remote control keys



#### The working conditions

Power Source	220-240V/AC	Working Humidity	<93%RH
Power Frequency	50/60Hz	Installation Height	>0m
Detection Range	>160°	Working Temperature	-25℃ ~+50℃

#### SOME PROBLEM AND SOLVED WAY

➤The load don't work:

a. Check the power and the load.

b. Whether the indicator light is turned on after sensing? If no, please check load.

c. If the indicator light does not turn on after sensing, please check if the working light corresponds to the ambient light.

d. Please check if the working voltage corresponds to the power source.

➤Adjust the sensitivity to high:

a. Please check if in front of the detection window there is hinder that has effect on receiving the signals.

b. Please check the ambient temperature.

c. Please check if the signals source is in the detection fields.

d. Please check the installation height.

➤The lamp will not go out during the test:

a. If there are continual signals in the detection fields.

b. If the time delay option is set to the longest.

c. If the power corresponds to the instruction.

d. If the air temperature changes near the sensor, air condition or central heating etc.